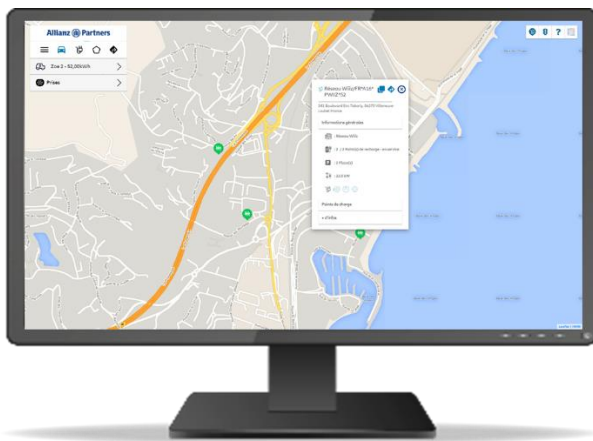


Paris, 26th May 2021

Allianz Partners enhances its electric vehicle (EV) assistance offer with BeNomad's ev-Move solution

Allianz Partners, a worldwide leader in roadside assistance and services, has integrated a new electric mobility solution into its roadside assistance operations. The “ev-Move” platform developed by BeNomad will help Allianz Partners meet the needs and usages of the increasingly numerous EV drivers across Europe.

In the event of battery failure, ev-Move makes it easy to localize compatible charging stations available near the vehicle. The operator can then send an SMS directly to the customer or the repairman to provide guidance until they reach the charging station.



Search for charging stations

Ev-Move also helps EV drivers estimate their energy consumption and optimize their trips. These features are made possible thanks to advanced algorithms that factor in numerous parameters (weather, traffic, vehicle profile, charging station availability, etc.) that can have an impact on autonomy, recharging and driving time.

This partnership is part of the global strategy of both Allianz Partners and BeNomad to facilitate the adoption of electric vehicles. The ev-Move solution will continue to evolve over the course of 2021, with new features being added such as the possibility of starting a recharge or estimating the price of a recharge.

Looking ahead, Allianz Partners is developing a network of specially trained and approved repairman for electric vehicles, as well as a dedicated helpline for EV drivers, accessible using the assistance button installed in the passenger compartment.

With this comprehensive range of services dedicated to electric vehicles, Allianz Partners is the preferred insurance and roadside assistance partner for many automotive manufacturers and insurers.

“Allianz Partners is already making a major contribution to the transition to electric and sustainable mobility. The integration of BeNomad's ev-Move solution into our systems and processes will help further improve the customer experience of EV assistance. We are

providing new services adapted to the new habits of our customers thanks to our deep knowledge and management of the EV ecosystem: charging operators, mobility operators, insurers and car manufacturers,” **comments Jérôme Joubert, Chief Marketing Officer for Roadside Assistance, Allianz Partners.**

"We are pleased to support Allianz Partners, a worldwide leader in insurance and assistance, in developing dedicated services for EV drivers. Our partnership and the adaptation of our solution to the needs of this sector will allow Allianz Partners to respond to EV assistance requests and ensure quality service to all of its customers," **adds Jérôme Hess, Head of Business Development at BeNomad.**

About Allianz Partners

Allianz Partners is a world leader in B2B2C insurance and assistance, offering global solutions that span international health and life, travel insurance, automotive and assistance. Customer driven, our innovative experts are redefining insurance services by delivering future-ready, high-tech high-touch products and solutions that go beyond traditional insurance. Our products are embedded seamlessly into our partners' businesses or sold directly to customers, and are available through four commercial brands: Allianz Assistance, Allianz Automotive, Allianz Travel and Allianz Care. Present in 75 countries, our 19,400 employees speak 70 languages, handle over 58 million cases each year, and are motivated to go the extra mile to help and protect our customers around the world.

For more information, please visit: www.allianz-partners.com

Press contact: Wellcom agency allianzpartners@wellcom.fr

Social media



Follow us on Twitter [@AllianzPartners](https://twitter.com/AllianzPartners)



Follow us on LinkedIn [@Allianz Partners](https://www.linkedin.com/company/allianz-partners)



Follow us on Youtube [@Allianzpartners](https://www.youtube.com/channel/UC...)



Follow us on Instagram [@allianzpartners](https://www.instagram.com/allianzpartners)

About BeNomad

Mapping, routing and navigation software development company, BeNomad is involved in the eMobility transition for more than 10 years with its ev-Move solution.

Ev-Move enables BeNomad's partners (OEM, eMobility service providers, fleet operators, road-side assistance...) to integrate key features to enhance the EV driver's life: energy consumption estimation, EV Trip Planner, Charging Station search, EV Specific Navigation...

For more information, please visit: www.benomad.com

Social media



Follow us on LinkedIn [@BeNomad](https://www.linkedin.com/company/benomad)